

120 Ton Rental Air Handling Unit

Unit Performance / Data



General

CAT / CLASS	XXXX-XX
Manufacturer	Smart Family of Cooling Products
Unit Model Number	SMTAH1D120Q
Equipment Insurance Value	NA
Duct/Hose Connections	(3) 20" Supply / (4) x 20" Return
Filter Size	QTY (8) 24" x 24"
Filter Type	2" Washable Media

Dimensions

Length (Base)	130"
Width	88"
Height	59-1/4"
Unit Weight	4,040 Lbs.

Electrical

Certification	ETL listed for UL 1995, CSA 236 STD 22.2
Single Point Power Supply	<u>460V/3PH/60HZ</u>
Connections	Single point Series 16 Cam-Lok connections
Cooling Amps	<u>34 A (460V)</u>
Unit MCA	43 A
Unit MFS	63 A
Generator Size	60kW

120 Ton Rental Air Handling Unit

Unit Features:

- Direct drive High Static plenum fan with 30hp TEFC motor
- Maximum rated static pressure of 8.5 in-wg
- Rated cooling air flow of 15,000 cfm with 100% Outside Air
- Air flow range of 8000 – 20,000 cfm
- Hydrophilic coated, non-lanced condenser fins
- Hydrophilic coated evaporator fins
- Stainless steel hardware
- Stainless Steel drain pan
- Permanently installed drain pan P-trap (protected within unit base)

Package Features:

- Phase monitor and Incorrect phase indicator light (red)
- Circuit Breakers on all motors
- Blower VFD with inline starter and bypass switch
- Speed Potentiometer for Blower VFD to adjust speed from 30Hz to 69Hz
- Full tubular rental frame with fork pockets & tie-down points
 - ✓ Hot-dipped galvanized
- Overhead certified lift frame
- Entering and leaving air temperature sensors
- Cooling unit may run in VFD or BYPASS mode
- Duct Doors factory installed for all supply/return connections
- Quiet operation

Operation procedure:

STEP 1: Confirm that circuit breaker (3CB) is switched ON and CONTROL POWER pilot light (1PL) is lit.

- If not, check phase monitor relay (PMR) and emergency stop (ES) button.
- If INCORRECT PHASE pilot light (2PL) is lit, check PMR for phase rotation and voltage setting.

STEP 2: Turn VFD/OFF/BYP switch (1SW) to require blower operating mode.

- VFD RUNNING pilot light (3PL) lit if blower is started using VFD.
- BYPASS RUNNING pilot light (5PL) lit if blower is started using bypass starter.
- Check blower circuit breaker overload (1OL) or VFD status if BLOWER TRIP pilot light (4PL) is lit.

STEP 3: Set blower running speed using SPD ADJ POT (potentiometer)

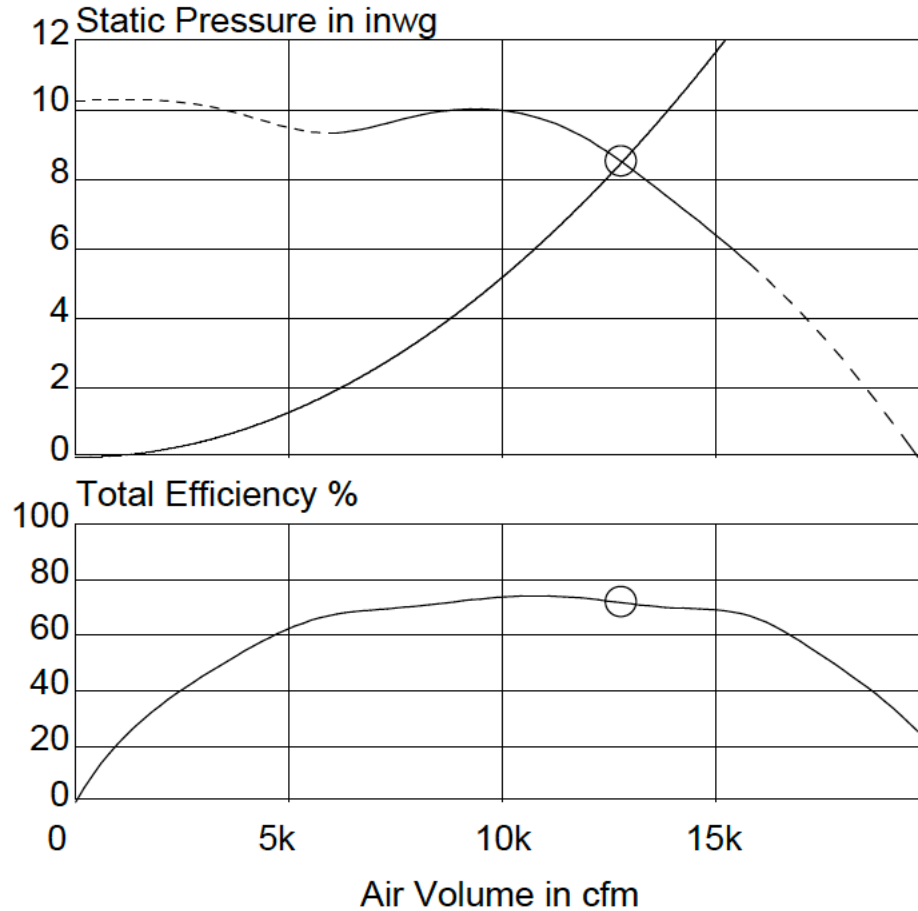
It is the customer's responsibility to always follow the written operating instructions of the unit and maintain safe work practices



For more information, contact:
888-365-5943

120 Ton Rental Air Handling Unit

Blower Data : 60HZ curve below. Unit may be operated above 60HZ in VFD mode with higher airflow



**Portable**
Air and Power

888-365-5943

www.PortableAirandPower.com

- Spot Coolers
- AC Units
- Chillers
- Boilers
- Heaters
- Generators

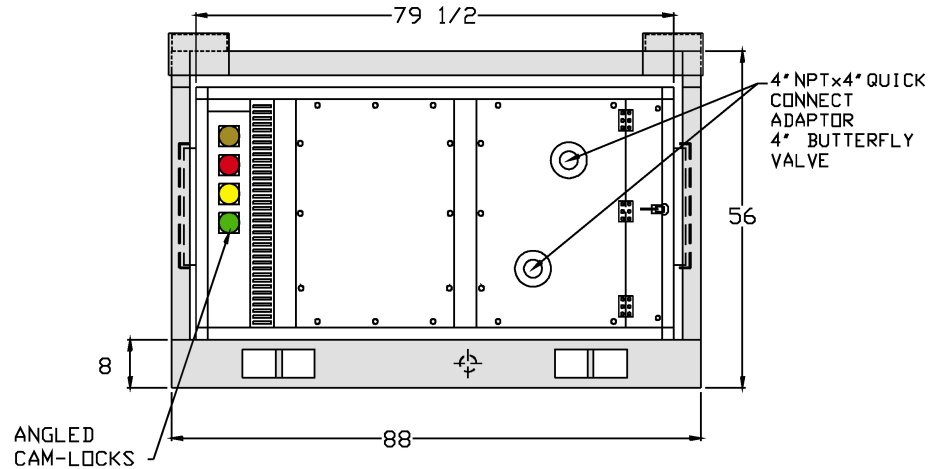
RENTALS
SALES
SERVICE



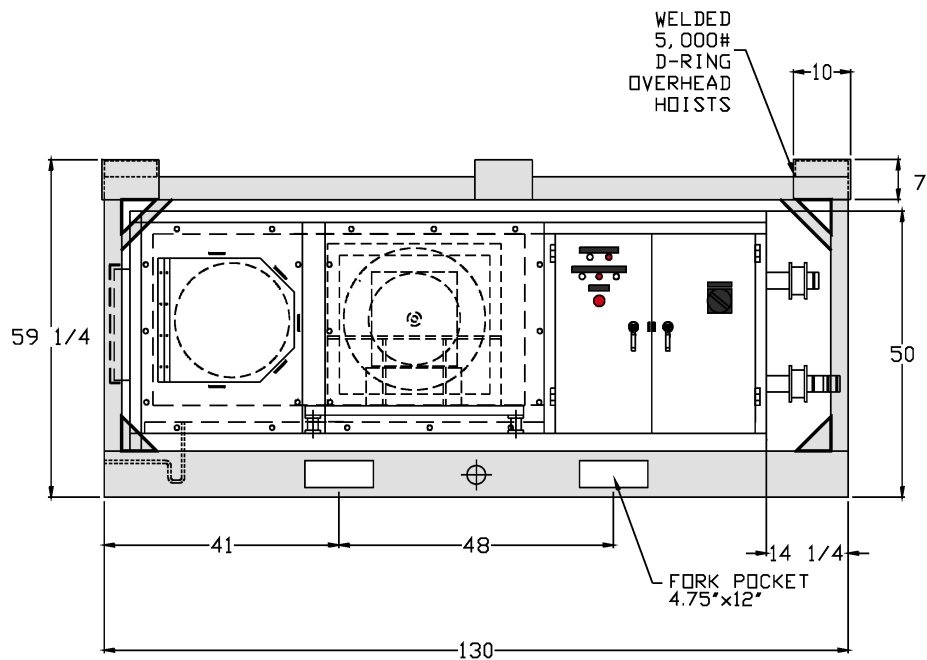
For more information, contact:
888-365-5943

120 Ton Rental Air Handling Unit

Unit Drawings



Front View



Portable
Air and Power

888-365-5943

www.PortableAirandPower.com

- Spot Coolers
- AC Units
- Chillers
- Boilers
- Heaters
- Generators

RENTALS
SALES
SERVICE

☀️ ❄️ 🔥

For more information, contact:
888-365-5943